

ECOSlide Putting the style and beauty back into your home



Quality Means
Attention to Detail

ECOSlide
The No.1 Sash Window Brand



About Sash Windows

Stylish, secure and energy efficient vertical sliders to suit almost every type of home

Vertical sliders are a traditional style of window. Commonly found in older properties, they are usually manufactured from timber. This elegant type of window is a popular replacement in period houses, its design giving your home a sophisticated charm and style that you won't achieve from a standard casement window. Real timber windows can be expensive so homeowners look to more affordable solutions such as PVC-U.

ECOSlide PVC-U sash windows are thermally efficient and environmentally friendly which mimic the charm of a classic timber vertical slider, but have all the benefits of a modern PVC-U system, giving you the best of both worlds.

Whether you live in an older property or a more modern home, **ECOSlide** PVC-U sash windows are a cost-effective solution for replacing like for like replacement or as an alternative to other styles. We can even install splay and 90° bay styles.

Choose from a range of colour and hardware options to complete your window and create a look that fits in perfectly with your home.

ECOSlide PVC-U sash windows will enhance your home and reduce your heating bills...saving you money

Enjoy a warm and comfortable home with the benefit of low maintenance



Sliding Function

ECOSlide PVC-U sash windows primarily function like a wooden box sash window with both the top and bottom sashes sliding up and down to suit your ventilation requirements.

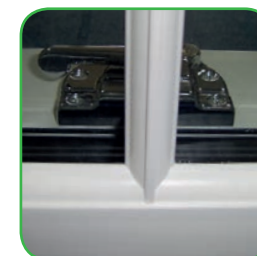
Convenient and simple to operate, the two sliding sashes within an outer frame work independently of each other on a balanced load mechanism, designed to hold the sash at any height.



Attention to Detail

Its the little details that help make **ECOSlide** sash windows as authentic as possible. Our PVC-U windows are designed to be smooth and sleek with slim profile sections giving a better appearance, which is pleasing to the eye as well as offering improved views from the inside and outside.

To complete the timber-like appearance, our windows incorporate the same stylish features found on original timber sash windows such as astragal bars, decorative sash horns and traditional-style operating hardware. The jambs, sash sections and meeting rail are all engineered to look just like a timber sash window, giving you truly authentic looking new windows.



Tilt & Easy Clean Function

ECOSlide PVC-U sash windows are incredibly low maintenance, requiring only a quick wipe down with a damp cloth to keep them looking as good as new.

The window sashes feature an inward opening tilt facility to allow easy and safe cleaning of the outside frame and glass from inside your home. This is particularly useful for second storey windows or windows positioned in a hard to reach place, such as above a conservatory.



Styles of Window

Appealing window installations

We offer a range of sash window styles to match your old windows as closely as possible and maintain the signature “design statement” for your home.

We can replace bay-style windows including splay and box bay windows. These are a common feature in older properties and when combined with a sliding sash window the installed appearance is very impressive.

We can also replace arched and swept head windows. These shaped styles are incredibly eye-catching. **ECOSlide** PVC-U sash windows are bespoke-manufactured to your exact requirements, to maintain the appealing charm of your home.

Other additional design options are available with internal Georgian Bar or external Astragal Bar detailing, to ensure your new windows are truly authentic in style.

Windows to suit from traditional-style through to contemporary



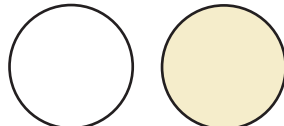
Colour & Foil Options

Find your ideal look with classic White, woodgrain foils or more contemporary colour options

Timber box sash windows were always painted and you can replicate this look with solid White and Cream colour options. If you want a more natural wood effect, our Crystal White, Cream, Golden Oak and Irish Oak foils give a realistic woodgrain appearance that mimics the grained texture and appearance of an original timber window.

We also offer colour outside / White inside options in Chartwell Green, Anthracite Grey, Rosewood, Black Brown, Cream, Golden Oak and Irish Oak. With this option you can have the external colour you like, whilst maintaining a White interior to better suit your home's decoration.

Profile Colour Options



White

Cream

Foil Inside and Outside Options



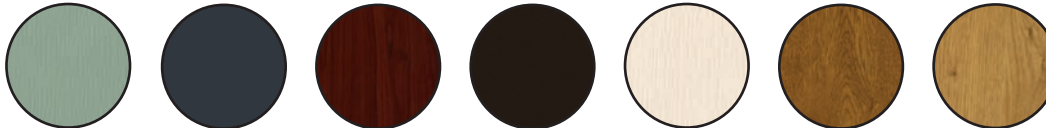
Crystal White

Cream

Golden Oak

Irish Oak

Foil Outside / White Inside Options



Chartwell Green

Anthracite Grey

Rosewood

Black Brown

Cream

Golden Oak

Irish Oak

Colours shown are a guide and are only as accurate as the printing process allows

Glass Options



Contora™

Charcoal Sticks™

Minster™

Satin™

Stippolyte™

More options available upon request

Spraying Options

Spraying and colour matching



Our onsite paint shop enables your **ECOSlide** PVC-U sash windows to be spray painted to match virtually any RAL code or colour.

You can personalise your vertical sash windows and colour co-ordinate them to match your property or just to suit your own personal taste.

Our optional spray painted finish is applied to the highest standards and will provide a unique and colourful addition to your home.



www.ecoslide.co.uk

Hardware and Security

Select your finishing touches from a variety of hardware

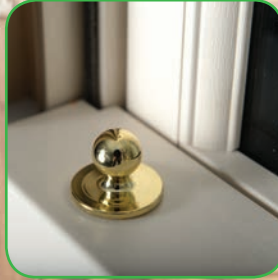
Add the finishing touches to your new windows with traditionally-styled vertical slider hardware. Pole eyes, tilt knobs, sash lifts, sash locks and travel restrictors are fitted as standard, but we can also offer D handles if needed. All hardware is available in Chrome, Gold, White, Black or Satin Chrome to complement our range of colours.

Other additional options are available such as Georgian or Astragal glazing bars and trickle vents, to give your new windows a truly authentic and classical vertical slider look.

In addition to this, **ECOSlide** PVC-U sash windows are designed to be extremely safe and secure. High performance locking systems keep your home safe from potential intruders to give you extra peace of mind.

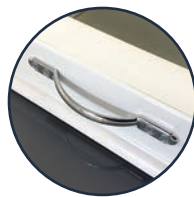
For added safety we also offer the option of a "Fire Egress" window design to provide emergency escape.

A wide choice of decorative window hardware options



Travel restrictors are useful for increasing levels of security and safety





D Handle

Can optionally be used in place of pole eyes or sash lifts.



Travel Restrictors

Offers enhanced safety and security for your sash windows. Used for restricting the opening of the window to 100mm. Key operated.



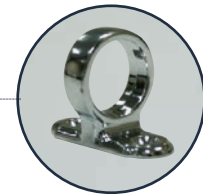
Sash Locks

Locks both bottom and top sashes in place. Key lockable.



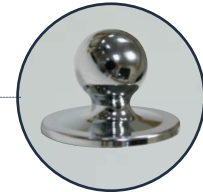
Security Bar

This feature increases security by stopping potential intruders using tools or excessive force to gain entry.



Pole Eyes

Used for opening and closing the top sash.



Tilt Knobs

Tilt knobs allow you to tilt the sliding sashes inward for easy cleaning from inside the home.



Sash Lifts

Used for opening and closing the bottom sash.



Satin Chrome



Chrome



Gold



White

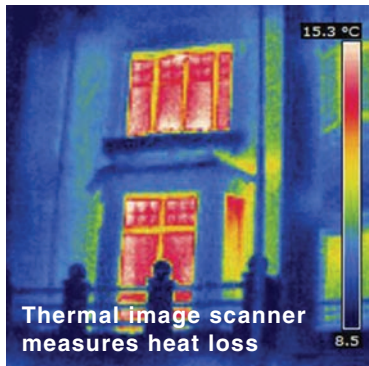


Black

Energy Efficiency & Ratings

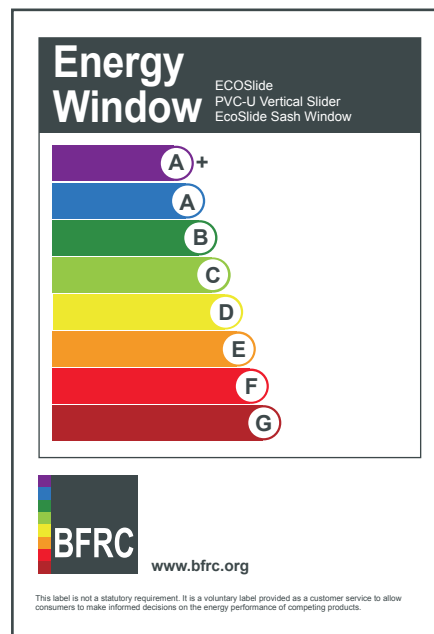
Enjoy a warmer, more comfortable home with energy efficient sash windows

Windows are given energy ratings based on their ability to insulate your home. These are displayed on a colour scale ranging from 'A+' (Purple) to 'G' (Burgundy), with 'G' being the least energy efficient and 'A' the most energy efficient.

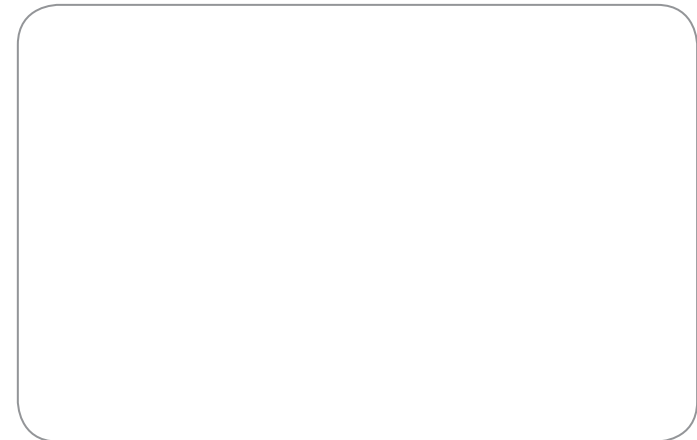


Putting the style back into your home with **ECOSlide** will make your home a warmer and more comfortable place to live, saving on your energy bills year on year.

ECOSlide PVC-U sash windows are 'A' rated as standard.



Your **ECOSlide** Installer Is:



ecoslide.co.uk